



# GAT MONTHLY MEMBERSHIP PROGRESS REPORT

Results as of: 4/30/2024

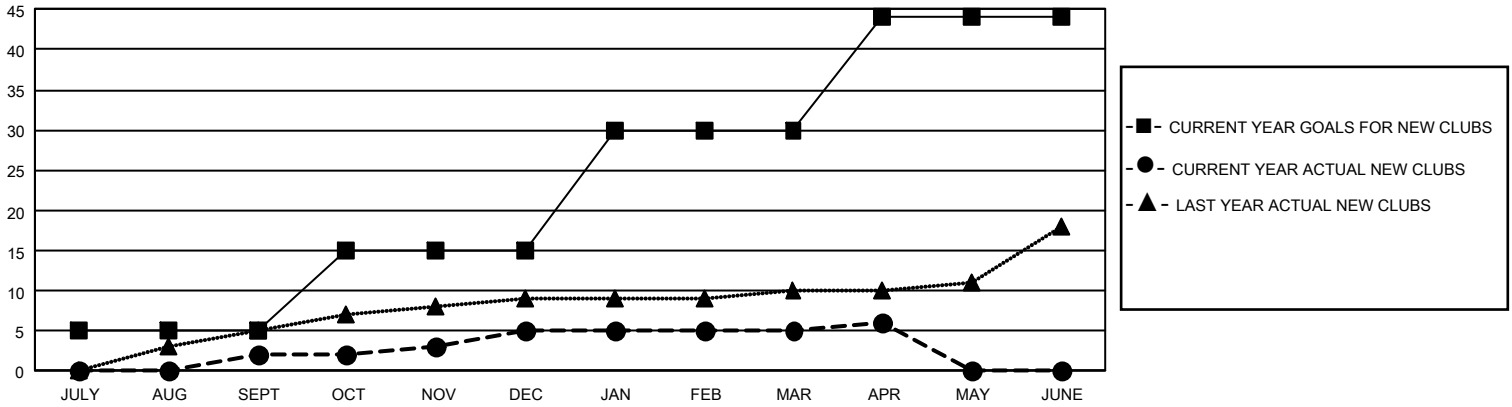
## GMT Constitutional Area 1, Group H

REPORT DOES NOT INCLUDE CLUBS IN UNDISTRICTED AREAS.

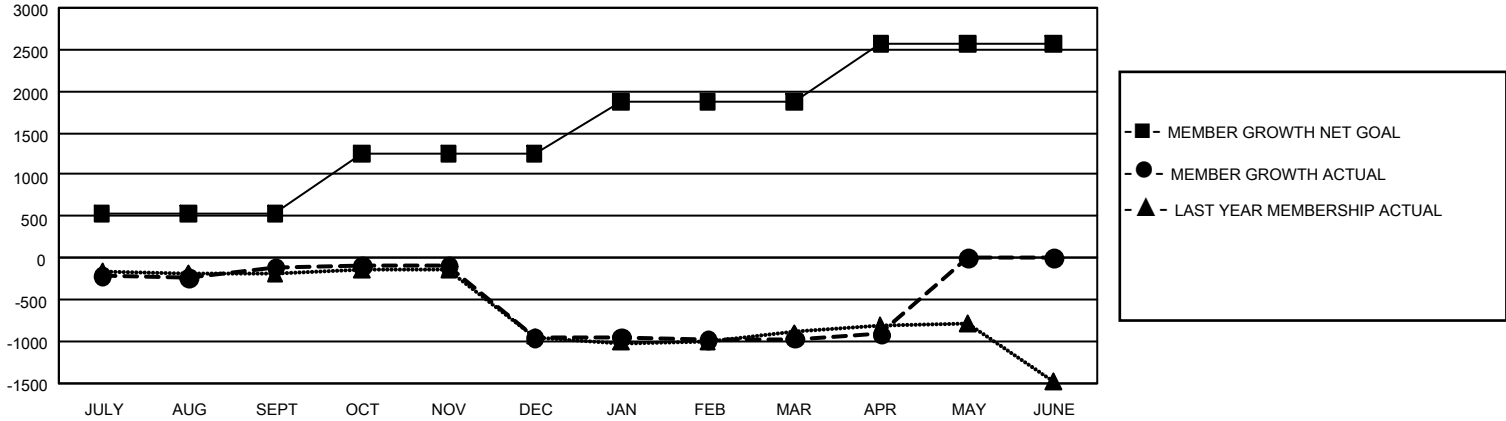
Clubs			
RESULTS FOR 2023-2024			
QUARTER	NEW CLUB GOAL	NEW CLUBS	DROPPED CLUBS
JULY/AUG/SEPT	15	2	15
OCT/NOV/DEC	30	3	23
JAN/FEB/MAR	45	0	6
APR/MAY/JUNE	42	1	1

Members			
RESULTS FOR 2023-2024			
QUARTER	MEMBER GROWTH NET GOAL	MEMBER GROWTH ACTUAL	DROPPED MEMBERS ACTUAL (including transfers)
JULY/AUG/SEPT	534	1,094	1,024
OCT/NOV/DEC	720	966	1,629
JAN/FEB/MAR	625	1,054	886
APR/MAY/JUNE	688	285	221

GOALS AND ACTUAL NEW CLUBS CUMULATIVE



GOALS AND ACTUAL MEMBERS CUMULATIVE



<b>DROPPED CLUBS: 44</b>	737 CLUBS OF 1,360 ADDED 1 OR MORE NEW MEMBERS	<b><u>GENDER DISTRIBUTION</u></b>	
		MALE 17,846 (57.46%) FEMALE 13,204 (42.52%) NON BINARY 1 (0.00%) PREFER NOT TO ANSWER 5 (0.02%)	
<b><u>DROPPED MEMBERS</u></b>		<a href="#">CLICK HERE FOR CUMULATIVE MEMBERSHIP DATA</a>	TOTAL FAMILY UNIT MEMBERS 5,950
DECEASED 446 CLUB CANCELLED 388 OTHER 2,924 <b>TOTAL 3,758</b>	FAMILY MEMBERS PAYING HALF DUES 3,060		